

DIVYA ABHAT, CONTENT STRATEGIST

ASHISH TONSE, WEB DEVELOPER

KZN CONSULTING, INC

WEBSITE UPDATES

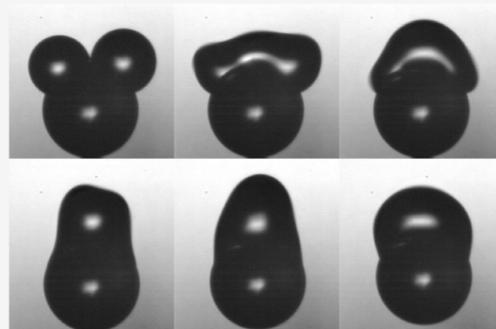
2017 YEAR IN REVIEW

- ▶ Took over full maintenance and MRSEC content
- ▶ Redesigned mrsec.org
- ▶ Moved to prem-dmr.org and redesigned front page
- ▶ Kicked off PREM LinkedIn Group
- ▶ First year running the diversity survey

MRSEC.ORG REDESIGN (BEFORE)

Recent Program Highlights

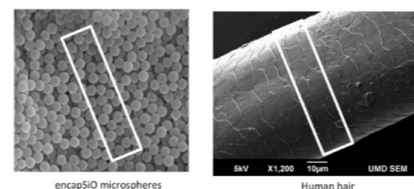
Self-Propelled Bouncing Droplets Remove Contaminants



Researchers at Duke University and the University of British Columbia are exploring whether surfaces can shed dirt without the use of fragile superhydrophobic coatings.

RT-MRSEC Graduate Fellow Launches Award-Winning Startup Company

Advanced silicone microspheres for encapsulation and delivery of strategic compounds



A team of Duke graduate students has been named one of five companies receiving a total of \$250,000 through the NC IDEA Foundation - an organization committed to supporting entrepreneurial busine

Surface Patterning of Nanoparticles with Polymer Patches

We demonstrate nanoparticle surface patterning, which utilizes thermodynamically driven segregation of polymer ligands from a uniform polymer brush into surface pinned micelles following a change i

[READ OTHER HIGHLIGHTS » »](#)

MRSEC Program Overview

Welcome to the internet hub of the Materials Research Science and Engineering Centers (MRSEC), a network of [Centers located at academic institutions](#) throughout the United States, funded by the [National Science Foundation](#). This website provides organized connections to information and resources at the various MRSECs for the international scientific, industrial, and educational materials research and development communities.

[Read more](#)

Brandeis University

[The Bioinspired Soft Materials Center](#)

Columbia University

[Center for Precision Assembly of Superstratic and Superatomic Solids](#)

Cornell University

[Cornell Center for Materials Research](#)

Duke University - NC State University - UNC Chapel Hill - NCCU

[Research Triangle MRSEC](#)

Harvard University

[Harvard Materials Research Center](#)

Massachusetts Institute of Technology

[Center for Materials Science and Engineering](#)

New York University

[NYU Materials Research Science and Engineering Center](#)

Northwestern University

[Northwestern University Materials Research Science and Engineering Center](#)

Ohio State University

[Center for Emergent Materials](#)

Pennsylvania State University

[Center for Nanoscale Science](#)

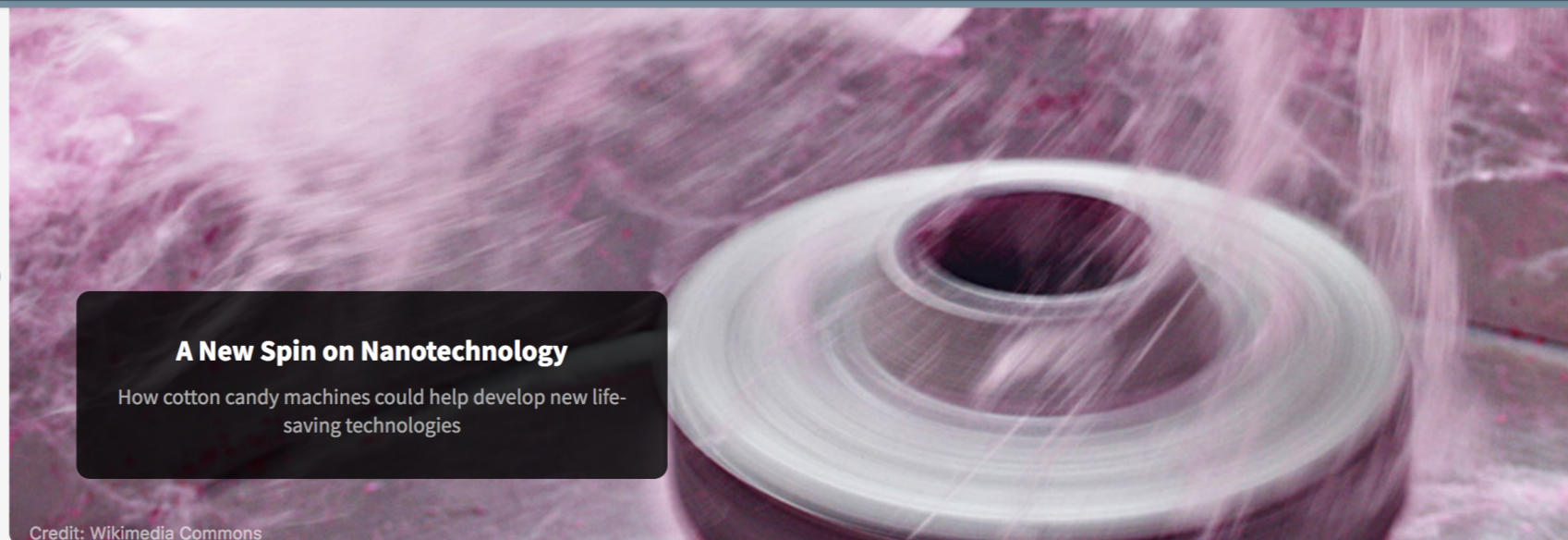
Princeton University

[Princeton Center for Complex Materials](#)

University of California at Santa Barbara

[Materials Research Laboratory: an NSF](#)

MRSEC.ORG REDESIGN (AFTER)



Recent Program Highlights

Imaging and Analysis Center Partners with Industry and Other Institutions



The Imaging and Analysis Center (IAC) supported by PCCM is a world-leading facility for materials characterization. It is a critical resource to our industrial user community.

Stars of Materials Science with Professors Cliff Brangwynne and Rod Priestley



On April 1, 2017 over 500 people visited Princeton University to learn about polymers from Princeton Center for Complex Materials researchers.

New Color Centers in Diamond for Quantum Information Science

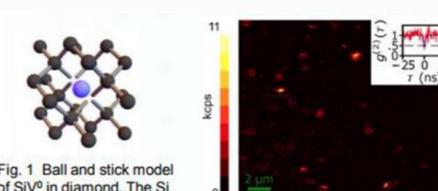


Fig. 1 Ball and stick model of SiV^0 in diamond. The Si atom (blue) sits in an interstitial site, giving rise to an inversion symmetric geometric configuration.

Fig. 2 Scanning confocal microscope image showing photoluminescence from single SiV^0 centers.

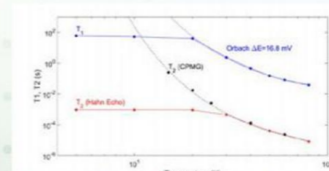


Fig. 3 Time-resolved electron spin resonance measurements of SiV^0 showing long spin relaxation and coherence times

Color centers in diamond are a promising platform for quantum information science, as they can serve as solid state quantum bits with efficient optical transitions.

MRSEC.ORG

REDESIGN

(BEFORE)

MRSEC Program Overview

Welcome to the internet hub of the Materials Research Science and Engineering Centers (MRSEC), a network of [Centers located at academic institutions](#) throughout the United States, funded by the [National Science Foundation](#). This website provides organized connections to information and resources at the various MRSECs for the international scientific, industrial, and educational materials research and development communities.

[Read more](#)

Brandeis University

[The Bioinspired Soft Materials Center](#)

Columbia University

[Center for Precision Assembly of Superstratic and Superatomic Solids](#)

Cornell University

[Cornell Center for Materials Research](#)

Duke University - NC State University - UNC Chapel Hill - NCCU

[Research Triangle MRSEC](#)

Harvard University

[Harvard Materials Research Center](#)

Massachusetts Institute of Technology

[Center for Materials Science and Engineering](#)

New York University

[NYU Materials Research Science and Engineering Center](#)

Northwestern University

[Northwestern University Materials Research Science and Engineering Center](#)

Ohio State University

[Center for Emergent Materials](#)

Pennsylvania State University

[Center for Nanoscale Science](#)

Princeton University

[Princeton Center for Complex Materials](#)

University of California at Santa Barbara

[Materials Research Laboratory: an NSF MRSEC](#)

University of Chicago

[Materials Research Center](#)

University of Colorado Boulder

[Soft Materials Research Center](#)

University of Michigan

[Center for Photonics and Multiscale Nanomaterials](#)

University of Minnesota

[UMN Materials Research Science and Engineering Center](#)

University of Nebraska

[UNL Materials Research Science and Engineering Center](#)

University of Pennsylvania

[The Laboratory for Research on the Structure of Matter](#)

University of Utah

[Next Generation Materials for Plasmonics and Organic Spintronics](#)

University of Wisconsin-Madison

[Materials Research Science and Engineering Center on Structured Interfaces](#)

Yale University

[CRISP: Center for Research on Interface Structures and Phenomena](#)

Powered by [Drupal](#)

Username *

Password *

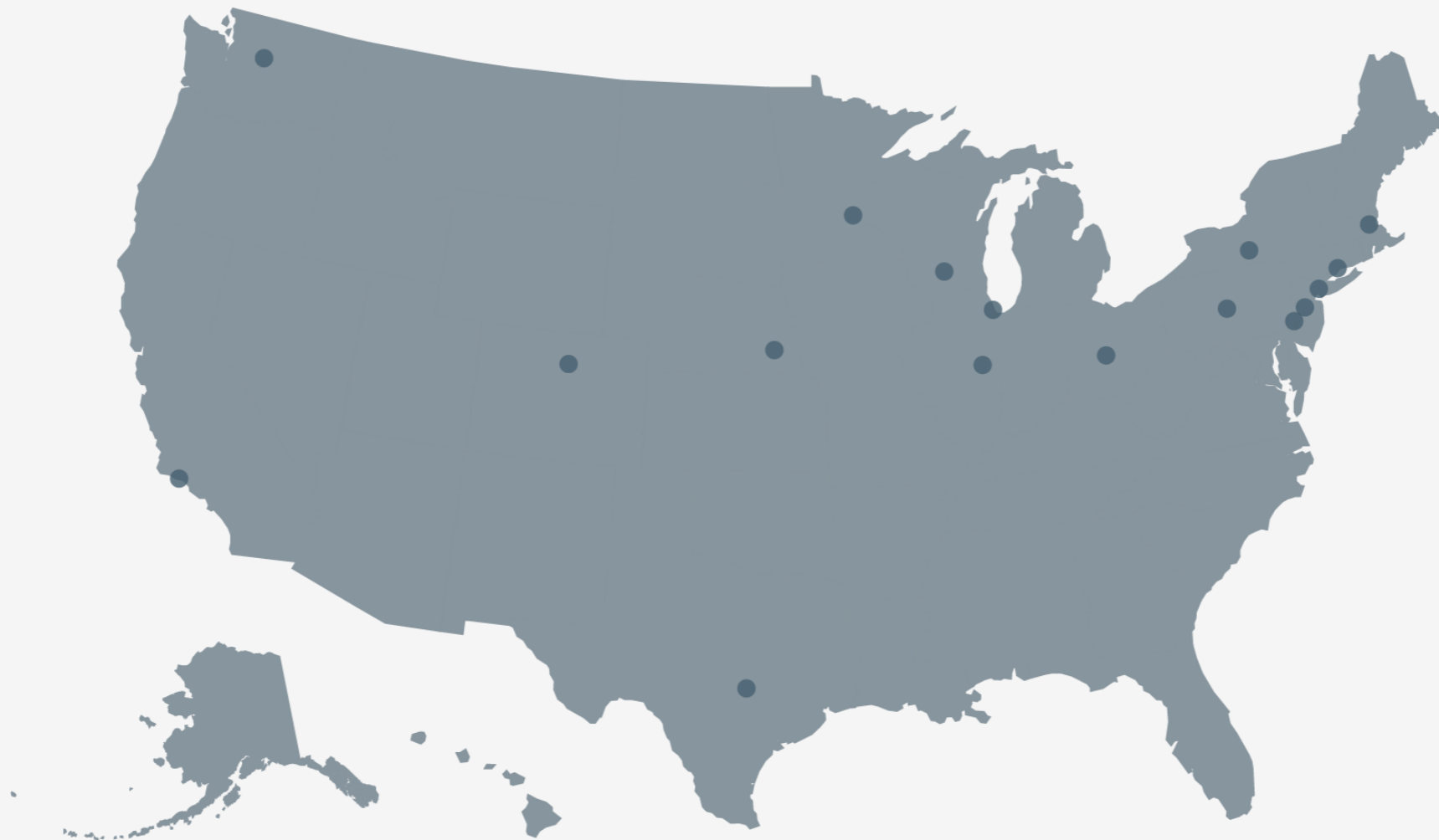
• [Request new password](#)

MRSEC.ORG REDESIGN (AFTER)

MRSEC Program Overview

Welcome to the internet hub of the Materials Research Science and Engineering Centers (MRSEC), a network of [Centers located at academic institutions](#) throughout the United States, funded by the [National Science Foundation](#). This website provides organized connections to information and resources at the various MRSECs for the international scientific, industrial, and educational materials research and development communities.

[Read more](#)

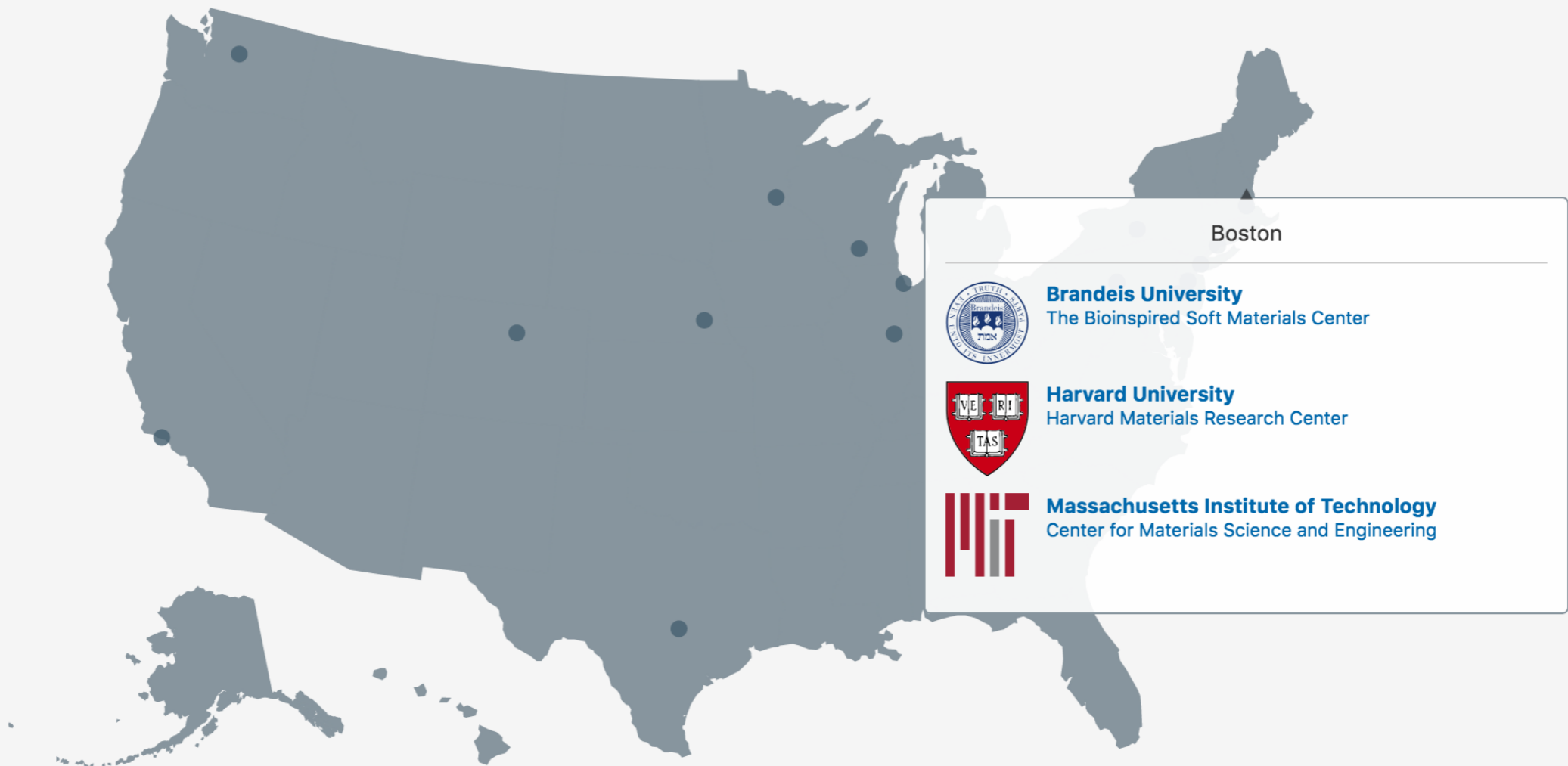


MRSEC.ORG REDESIGN (AFTER)



MRSEC Program Overview

Welcome to the internet hub of the Materials Research Science and Engineering Centers (MRSEC), a network of [Centers located at academic institutions](#) throughout the United States, funded by the [National Science Foundation](#). This website provides organized connections to information and resources at the various MRSECs for the international scientific, industrial, and educational materials research and development communities.

[Read more](#)



PREM-DMR REDESIGN (BEFORE)



[HOME](#) [PROGRAM OVERVIEW](#) [HIGHLIGHTS](#) [EVENTS](#) [CONTACT](#) [OTHER DMR SITES](#)

PARTNERSHIP FOR RESEARCH AND EDUCATION IN MATERIALS (PREM)

The objective of PREM is to enhance diversity in materials research and education by stimulating the development of formal, long-term, collaborative materials research and education partnerships between minority-serving institutions and the National Science Foundation (NSF) Division of Materials Research (DMR) supported groups, centers, and facilities. [\[read more\]](#)

NSF'S STRATEGIC GOALS

- People - a diverse, internationally competitive and globally-engaged workforce.
- Ideas - discovery across the frontiers of Science and Engineering, connected to learning, innovation, and service to society.
- Tools - broadly accessible, state-of-the-art S&E facilities, tools, and other infrastructure that enables discovery, learning, and innovation.
- Organizational Excellence - an agile, innovative organization that fulfills its mission through leadership in state-of-the-art business practices.

ACTIVE PREMS

AWARD YEAR: 2015

- [California State University, Los Angeles - Penn State University](#)
- [Hampton University - Brandeis University](#)
- [New Mexico Highlands University - Ohio State University](#)
- [North Carolina Central University - Penn State Center for Nanoscale Science](#)
- [University of Puerto Rico at Humacao - University of Pennsylvania](#)
- [University of Texas Rio Grande Valley \(formerly UT Pan American\) - University of Minnesota](#)

AWARD YEAR: 2012

- [California State University, Northridge - Princeton MRSEC](#)
- [Howard University - Cornell MRSEC](#)
- [Jackson State University - University of California Santa Barbara MRSEC](#)
- [Norfolk State University - Purdue University - Cornell University PREM: Partnership for Photonic Metamaterials](#)
- [Texas State University - San Marcos - North Carolina Research Triangle MRSEC](#)
- [The University of Texas at El Paso - UC Santa Barbara](#)

USER LOGIN

Username *

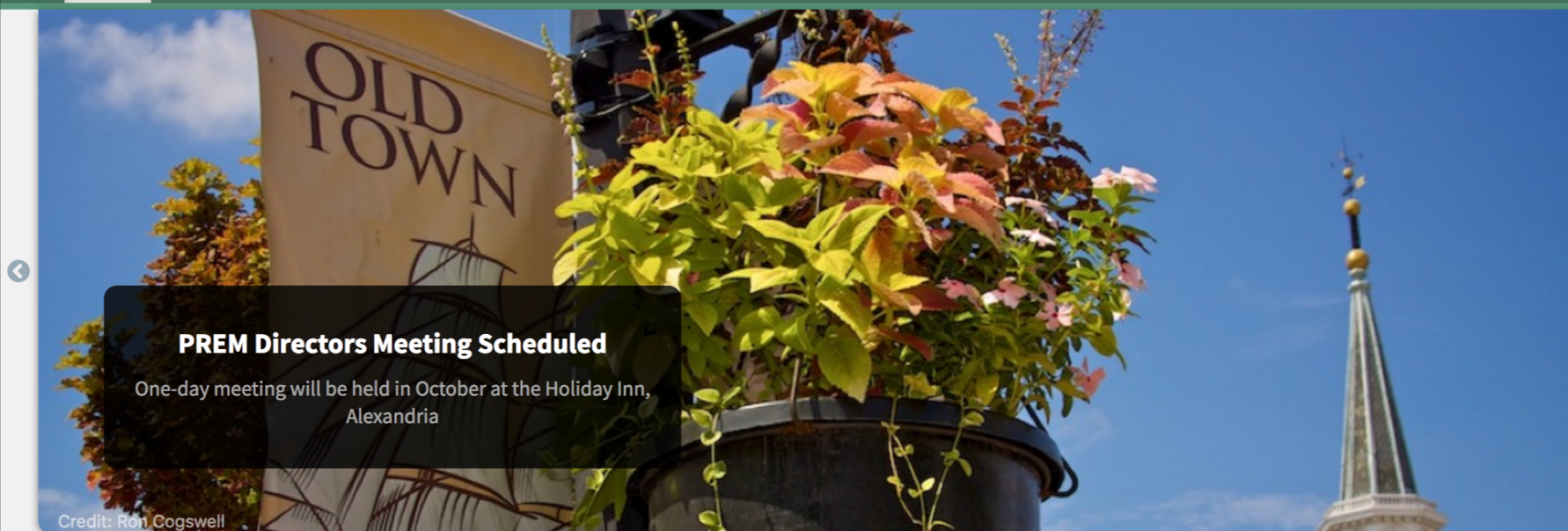
Password *

- [Request new password](#)

© [Copyright](#) 2015 Materials Research Science & Engineering Centers • All rights reserved. | [Back to top](#)

Powered by [Drupal](#)

PREM-DMR REDESIGN (AFTER)



PREM Directors Meeting Scheduled

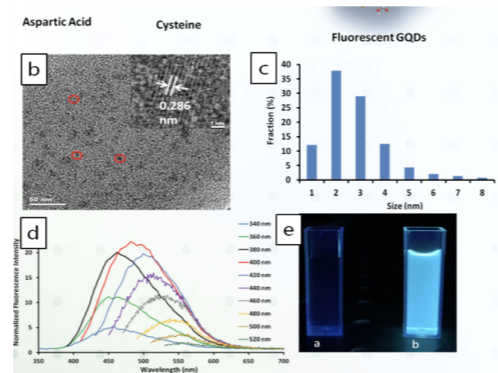
One-day meeting will be held in October at the Holiday Inn, Alexandria

Credit: Ron Cogswell

Recent Program Highlights

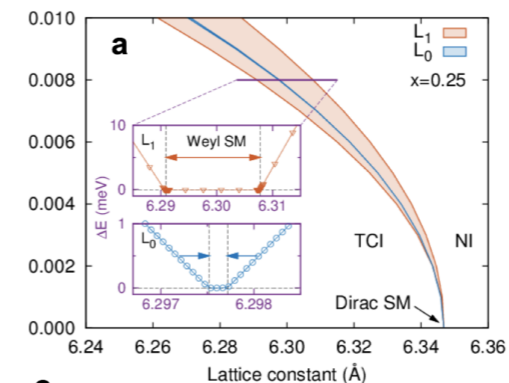
One-Step Synthesis of Fluorescent Graphene Quantum Dots Through Pyrolysis of Amino Acids

Researchers develop a novel method for the synthesis of graphene quantum dots (GQDs) by using two amino acids, which are non-toxic natural materials containing nitrogen groups for easy surface modification.



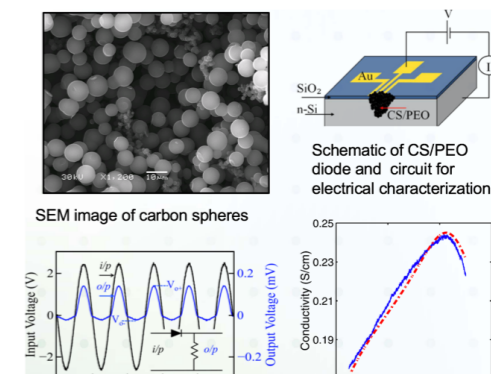
A Pressure-Induced Emergence of a Weyl Semimetal Phase in $Pb_{1-x}Sn_xTe$

The picture of how a gap closes in a semiconductor has been recently radically transformed by topological concepts. Instead of the gap closing and immediately reopening, we predict that in the absence of inversion symmetry, a topological metallic phase pr



Polymer/Carbon Spheres Composites for Device Applications

This study is the first to demonstrate real applications using conducting carbon spheres fabricated via an easy, rapid, cheap, and green technique.



PREM LINKED IN GROUP



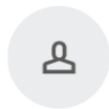
National Science Foundation (NSF) PREM-DMR

4 members



Manage

✓ Member



Start a conversation with your group

Enter a conversation title...

[Conversations](#) [Jobs](#)



Divya Abhat · **Group Owner**

Content Strategist at National Science Foundation

⋮ 6d

PREM Program Accepting Proposals

The National Science Foundation is now accepting proposals for its revised PREM program. Proposals must be submitted by a minority-serving college or university by January 29, 2018.

The Division of Materials Research PREM program is designed to enhance... [Show more](#)



ABOUT THIS GROUP

PREM-DMR serves current researchers, students, faculty, and alumni that are part of the National Science Foundation's Partnership for Research and Education in Materials program. The purpose of this group is to engage the community through discussion... [Show more](#)

[Group rules](#)

DIVERSITY SURVEY – CURRENT ISSUES

- ▶ Difficult to track which respondents have taken the survey
- ▶ Cumbersome manual process to remind respondents to take the survey
- ▶ Difficult to compile survey data
- ▶ No protection against duplicate responses

DIVERSITY SURVEY – NEW PLATFORM

- ▶ We track respondents for you (while preserving anonymity)
- ▶ We send reminder emails
- ▶ Survey data available in multiple formats (PDF, CSV, Excel)
- ▶ Protection against duplicate responses (every user gets a unique link)

[OVERVIEW](#)[RECIPIENTS](#)[OPTIONS](#)

Invitations ?

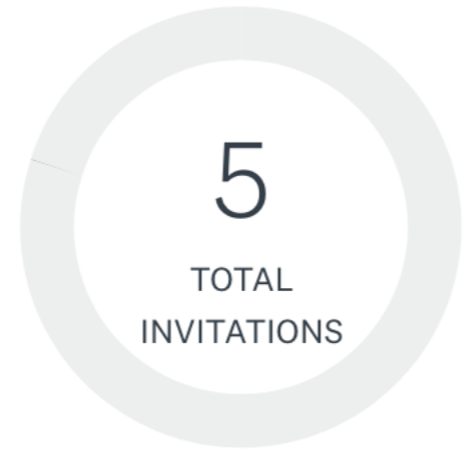
See the open rate

See the unopened rate

0 bounced (0%)

See the clicked through rate

0 opted out ?



Responses ?

3 complete (100%)

0 partial (0%)



Message History

[INVITE MORE](#) ▼[SEND REMINDER](#) ▼[SEND THANK YOU](#) ▼

10/2/2017	Sent invitation message to 1 contacts	...
10/2/2017	Sent reminder message to 2 contacts	...
10/2/2017	Sent invitation message to 4 contacts	...

Spring 2017

OPEN

OVERVIEW

RECIPIENTS

OPTIONS

ALL MESSAGES (5) ▼

ALL RECIPIENTS (5) ▼

EXPORT ALL (.CSV)

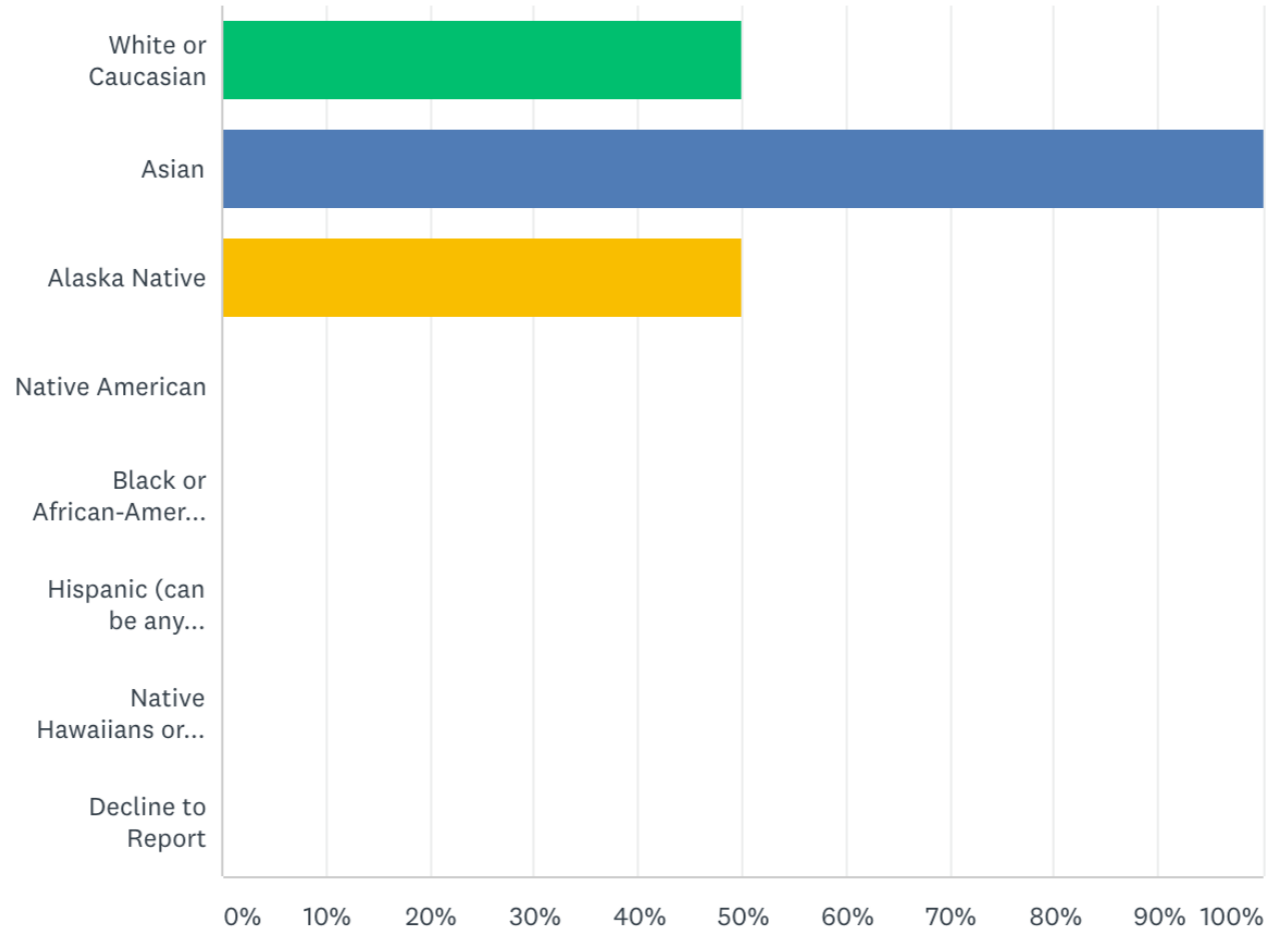
Search recipients



EMAIL ▼	FIRST NAME	LAST NAME	SENT	RESPONDED	CUSTOM 1
ashish.tonse@gmail.com	Ashish	Tonse	Yes	Complete	Yale
ashish@kznconsulting.com	Ashish		Yes	Complete	Harvard
ashish+2@kznconsulting.com	Ashish	Tonse2	Yes	Complete	Harvard

Please report your Racial/Ethnic Background (check all that apply)

Answered: 2 Skipped: 0



ANSWER CHOICES	RESPONSES
White or Caucasian	50.00% 1
Asian	100.00% 2
Alaska Native	50.00% 1
Native American	0.00% 0
Black or African-American	0.00% 0
Hispanic (can be any ethnicity)	0.00% 0
Native Hawaiians or Pacific Islander	0.00% 0
Decline to Report	0.00% 0
Total Respondents: 2	

WE WANT YOUR FEEDBACK

- ▶ Additional Suggestions for the Survey Process
- ▶ Suggestions for how to highlight your Centers